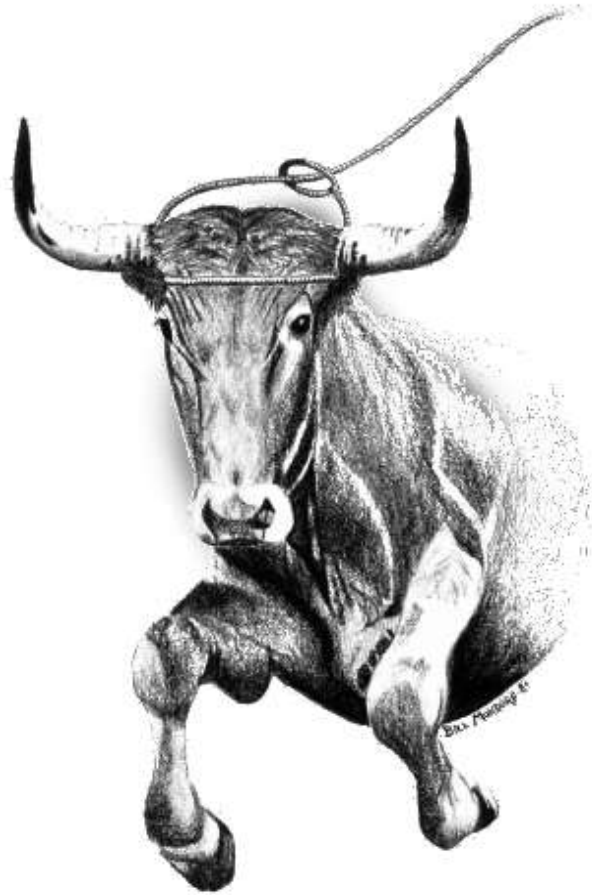


# NORTH AMERICAN CORRIENTE ASSOCIATION



## Judging Guidelines For Corriente Cattle

All rights reserved. This publication may not be reproduced in whole, or in part, in any form or by any means, without prior express permission from the North American Corriente Association.

# Judging Guidelines for Corriente Cattle

---

## *Judging Guidelines for Corriente Cattle*

Revised February 6, 1996

Updated March, 1998

Updated March, 2000

Updated May, 2004

Updated January, 2005

Updated January, 2006

Updated May, 2010

These guidelines are intended to be used as guidelines only, not rules for which there are no exceptions. If you have comments, suggestions, or questions about any part of them, please do not hesitate to let the NACA know. From time to time, the Board of Directors will review these guidelines, and will take into consideration any information received from our members.

A judge of Corriente cattle should evaluate them as an animal bred specifically for excellent performance in the rodeo arena. Many typical characteristics of the beef breeds are not desirable, nor are the excessively long horns of the Texas Longhorn or the Watusi. Corrientes are not beefy, heavily muscled, tall or rawboned. They are small, trim cattle with sufficient bone and strength for easy action and endurance. Regardless of use, the general conformation, horn shape, and disposition remain the same.

It is important for a judge to keep in mind the birth date of each animal in a class. For example, a class for yearling bulls will often require the judge to be able to compare the qualities of a 6-month old animal against those of a 12-month old, and allow for considerable differences in size and horn growth. Since an older animal is generally easier to evaluate, it is essential to develop the ability to see the potential attributes of the younger animals in each category. Birth dates should also be given close consideration in classes for mature animals which include cattle from age 3 and up.

Corriente cattle should have gentle dispositions. Judging the disposition of penned breeding stock is difficult, and cattle can be expected to act differently according to how they have been kept and handled at home. Team roping and bulldogging cattle should neither show an aggressive disposition by their behavior in the chute nor after they are roped or dogged. In any case, any indication of an undesirable disposition should be noted by the judge.

## Judging Guidelines for Corriente Cattle

---

The following description of the conformation of the ideal Corriente will give both judges and breeders of show cattle a fairly specific idea of the different characteristics requiring evaluation. It is up to each judge to develop methods for comparison and scoring for conformation. Clearly, a judge of Corrientes should place special emphasis on the animal's horns as well as its disposition and overall appearance. Some of the more specific characteristics mentioned here can be used for evaluation when selecting between very comparable animals. Overall, a Corriente is narrow and fine compared to beef cattle, with the head, neck, forequarters and hindquarters well balanced.

### Definition of terms used occasionally throughout this guideline

**DESIRABLE:** A characteristic of merit.

**ACCEPTABLE:** A characteristic often seen, but not of any particular merit.

**UNDESIRABLE:** A characteristic of negative value.

**UNACCEPTABLE:** A characteristic which eliminates an animal from recognition in a show.

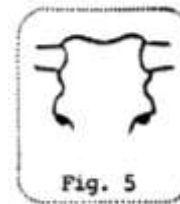
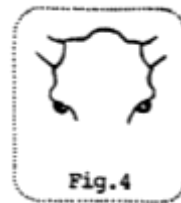
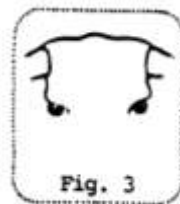
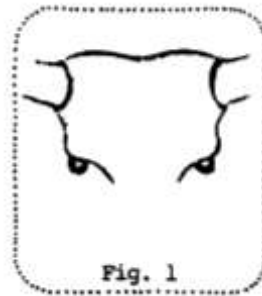
# Judging Guidelines for Corriente Cattle

---

## CONFORMATION

### HORNS and POLL:

- Horns well set in a fairly wide poll (figure 1)
- The poll should be neither narrow (figure 2), too wide (figure 3), high and knobby (figure 4), nor an extreme ridge high above the ears (figure 5).



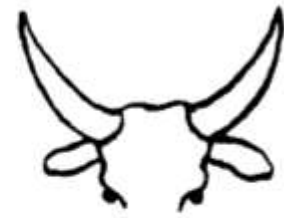
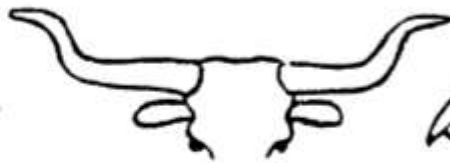
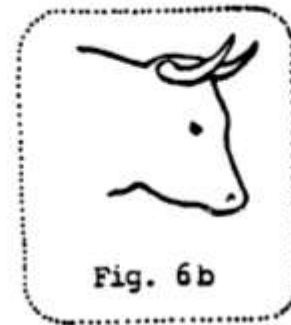
- Heavy horn bases are desirable and should be given as much consideration as length of horns.
- Extreme horn length is undesirable.

## Judging Guidelines for Corriente Cattle

---

### SHAPE:

- The horns should be essentially symmetrical.
- The horns should slant slightly forward from the base.
- The horns from the base to approximately the tips of the ears should be parallel to the ground or slope upward gradually (figure 6).
- The horns should begin curving at approximately the tips of the ears (figure 6).  
At this point they should curve forward (figure 6a) or forward and upward (figure 6b).
- The tips of the horns should not curve in toward each other (figure 7), nor should they flare out or back (figure 8).
- A downward slope is unacceptable (figure 9).
- Watusi, or Brahman – shaped horns are unacceptable (figure 10).



## Judging Guidelines for Corriente Cattle

---

- A 12-month old bull's horns should show at least 6 inches of length (as measured from the hairline to the tip along the outside of the curve) and at least a 6-inch base circumference (measured at the hairline). Heifers at 12 months should have at least 4 inches of length and 4 inches of base (measured in the same manner).
- A 12-month old bull or heifer will often not yet show any curve to its horns (figures 11 & 12).
- A yearlings horns may slope back slightly. This is acceptable but not desirable.



Fig. 11

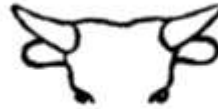


Fig. 12

- Cracks going the length of the horn or any natural scarring on the horns, including broken horn tips are acceptable. A broken horn should not be discounted.
- The horns of any animal which is registered or for which application for registration is made may be tipped at any age, but no bull or female less than three years old which is entered into a show may have its horns tipped, altered, or tampered with in any way. Steers may be shown at any age with their horns tipped. Horns which have been cast are allowed, but may make it impossible for a judge to give credit for a desirable natural horn shape.

### Horn Measurements from Yearling Cattle

#### Placing in past NACA Shows

	<u>Ages in Months</u>	<u>Horn Length</u>	<u>Horn Base</u>
Bulls	14	7 ¼ in.	7 in.
	12	6 ¾	7 ½
	14	9	8 ¼
	8	7 ¾	7 ¾
	13	8 ¼	8
Heifers	12	5	5
	12	6 ¾	7 ½
	11	5 ½	5 ½
	11	7	5 ½
	12	7 ¾	6 ½

## Judging Guidelines for Corriente Cattle

---

### HEAD:

- “V” shaped with plenty of width between the eyes which reflects the fairly wide poll.
- Long, narrow, tapered face, never boxy or square: The distance from the eyes to the nostrils should be approximately  $1\frac{1}{2}$ , times the distance from the eyes to the top of the poll (figure 13).



Fig 13

Correct



Fig. 14

Too long and narrow



Fig. 15

Too short and thick

- Small, narrow muzzle with nostrils wide and well flared.
- Bright alert eyes.
- Ears oval with enough hair for protection from cold and insects.
- Very large ears are undesirable.
- Low ears showing Brahman characteristics are unacceptable.
- Sex should be expressed by head, with bulls showing masculinity by 12 months.
- Immature animals may have less length to their muzzle.

### NECK:

- Trim
- Enough length to be flexible
- Enough strength for roping and bulldogging.
- A heavy neck in a mature bull is acceptable, but should still show flexibility.

# Judging Guidelines for Corriente Cattle

---

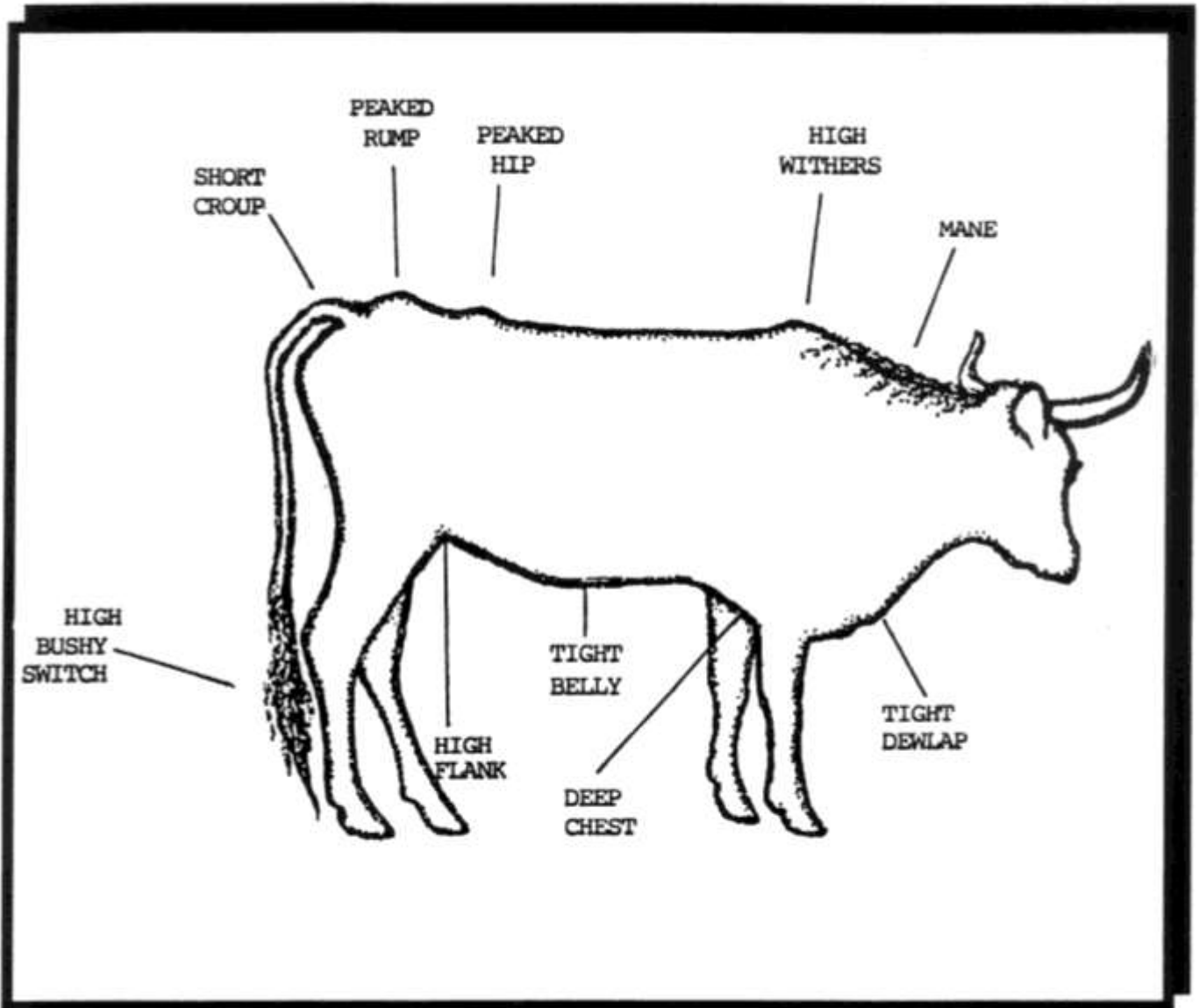


Fig. 16



# Judging Guidelines for Corriente Cattle

---

## FOREQUARTERS:

- Narrow, deep chest and between front legs.
- Clean, straight, structurally sound front legs.
- Adequate bone and feet.
- Brisket and dewlap clean and tight.
- Sloping shoulder.
- Narrow behind shoulders with high withers.
- Brahman type hump is unacceptable.
- Allowance should be given for the masculine characteristics of a mature bull (i.e., heavy forequarters in a mature bull are acceptable)

## HINDQUARTERS:

- Short narrow peaked rump.
- Never thick, full or deep.
- Legs set well under.
- Hocks close together and shanks sloping forward, not perpendicular to the ground.
- Movement with legs close together.

## TOPLINE:

- Slack frame with high withers, narrow shoulders, peaked top of hip, and short, narrow croup.
- A meaty, sloping rump is not acceptable.
- Rough tailhead is preferable.
- Tail switch high and bushy.

## UNDERLINE:

- Clean and trim from throat to tail.
- Deep heart girth, but not deep bodied throughout.
- High, clean, tight, narrow flanks.
- Small belly, but varies with feed.

## COWS:

- Neat, tight udder with small to moderate teats.
- Masculine characteristics are undesirable.

## BULLS:

- Two well developed and descended testicles of approximately equal size are a requirement.
- In comparison to other bulls of the same age in the same class very small testicles are undesirable.
- Sheath tight and closely attached.

## Judging Guidelines for Corriente Cattle

---

### RECOMMENDED WEIGHTS

Mature Bull:	Up to 1,000 pounds
Mature Cow:	Up to 800 pounds
Yearling Bull or Steer:	Up to 400 pounds

### COLOR :

- Any color is acceptable except solid white with absolutely no pigmentation whatsoever.

### HIDE:

- Either very tight or extremely loose skin is unacceptable.

### COAT:

- Dense, with hair in ears, mane, and heavy tail switch.
- A judge should be prepared to fairly compare a slick coated animal from a southern climate against a heavy coated animal from a northern climate.

### CONDITION:

- A judge should be able to fairly compare a well fed animal to one in working condition.

# Judging Guidelines for Corriente Cattle

---

## JUDGING PERFORMANCE CATTLE

### TEAM ROPING CATTLE

Performance cattle should be caught twice with a slick horn catch, with a heeler present and making every effort to catch. On each run the judge will score the animal 1(very poor) to 20 (excellent).

If the animal is not caught and it is the judge's opinion that it was the fault of the ropers, the animal is not scored, but run again. If it is the judge's opinion that it was the animals fault, it should receive a score of 5 or under.

A low score can, if the judge chooses, result in immediate disqualification of an animal regardless of the number of runs.

After the cattle are roped, the judge will evaluate the top 10 animals for conformation and give them each a score of 1 (very poor) to 10 (excellent). The scores given on two good runs are then both added to the conformation score. The cattle are placed in the class according to the greatest number of total points. The judge will tally the points.

It is a good idea to keep notes on each animal's performance in case asked for reasons for a score. Judges shall use official score cards.

### EXAMPLE OF SCORING

#### NACA Judging Score Card

Hip #	Date of Birth	Conformation Score (1-10)	Performance Scores (1-20)		TOTAL	Comments
			1 <sup>st</sup>	2 <sup>nd</sup>		

## Judging Guidelines for Corriente Cattle

---

A team roping animal SHOULD:

- Show sufficient strength and stamina to be durable.
- Be calm in the chute.
- Break smoothly out of the chute.
- Run straight and steadily.
- Hold its head level or up.
- Handle nicely on a rope.
- Bounce out smoothly after the head is caught, even with tension on the rope.

A team roping animal (when handled properly) SHOULD NOT:

- Fight its head.
- Run Blindly.
- Run erratically.
- Cut behind the ropers.
- Duck its head.
- Lie down (before both ends are roped).
- Jump too high.
- Drag with its hind legs after the head is roped.

A team roping animal can be any sex, but there must be a separate class for each sex, (i.e., roping steer, roping bull, and roping heifer).

For more information on judging Same Sire Roping Cattle classes, see section under Judging Specific Classes at the end of the Guideline.

# Judging Guidelines for Corriente Cattle

---

## BULLDOGGING CATTLE

Bulldogging cattle will be scored like team roping cattle. First, they will be scored 1 to 10 on conformation, then scored 1 to 20 on two runs in the arena when they are successfully bulldogged. They may be scored 5 or less if they are not dogged due to their own behavior, and may be eliminated during the class if they have received a low score. The performance scores are added to the conformation score. Again, the scores should be tallied by the judge.

When judging the conformation of bulldogging cattle, the judge should consider a minimum weight of 450 pounds and a maximum weight of 650 pounds. The horns must be at least 10 inches long measured from base of horn to tip, and may be tipped. Heavy bases are especially desirable. Flatter, wider horns are preferable since they give the dogger more leverage, as does a longer muzzle. Short headed cattle are less desirable. In order to withstand the doggers weight, a steer should be neither light in its front end, nor slab sided.

It is a good idea to keep notes on each animal's performance in case asked for the reasons for a score.

### A bulldogging animal SHOULD:

- Show sufficient strength and stamina to be durable.
- Be calm in the chute.
- Break smoothly out of the chute.
- Run straight and steadily.
- Be able to withstand the doggers weight.
- Be small enough to be thrown.
- Have a limber neck.

### A bulldogging animal SHOULD NOT:

- Set up.
- Run erratically.
- Duck its head.
- Dog fall (fall to wrong side).
- Duck under hazing horse.

A dogging animal can be any sex/any age: classes can include bulls, steers, and heifers in one class. Heifers will be kept separate during the class. The class will still require a minimum of six animals from at least two exhibitors limited to three entries maximum each.

All entries for the bulldogging class must have been dogged from a horse a minimum of three times prior to entry.

## Judging Guidelines for Corriente Cattle

---

### JUDGING EXAMPLE

An NACA judge is required to give reasons for the results of conformation classes for the benefit of cattle owners and spectators if asked to do so by the show management. The judge may choose whether or not to give reasons for the results of the performance classes. When giving reasons try to be brief and gracious. A judge is also likely to be 'politely queried' about decisions after the show. Below is an example of how a judge might make decisions and explain conclusions. The four mature cows used in the example are not necessarily all actually show quality.

(See photos of cows "A", "B", "C", and "D".)

I placed this class of Corriente cows: "A", "B", "C", and "D". I placed "A" at the top because she showed the best combination of true Corriente traits of any cows in the class, being more correct about her head and horns, smaller bodied, with the most desirable bone, leg structure, and udder.

I placed "B" second because she was larger and showed some Longhorn characteristics, being longer about her head and having more flare in her horns. However I placed "B" over "C" because she was smaller and showed more Corriente traits, being rougher in her top and bottom lines, lighter boned, better uddered, and with more desirable head and heavier horns than "C".

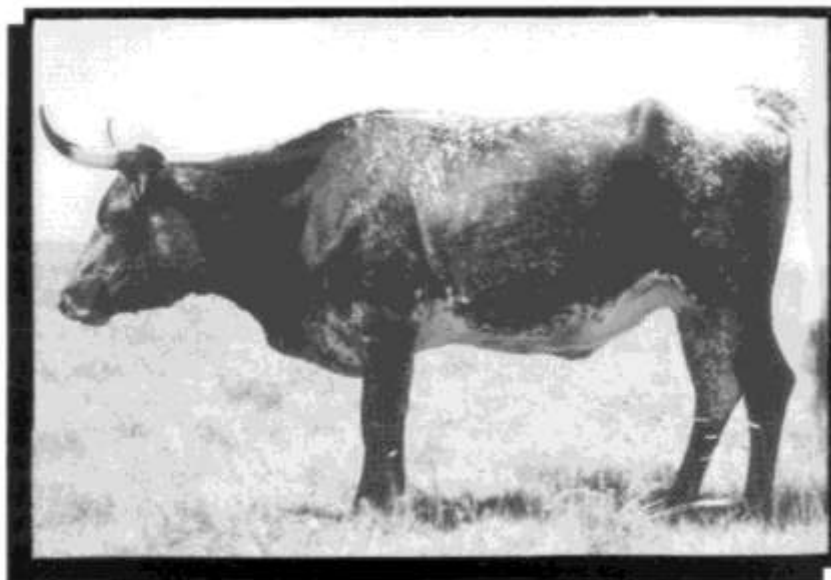
I grant that "C" was narrower bodied, but I placed her third because she showed too much dairy breeding, being light and narrow horned, too small and dainty about her head, and too smooth and straight about her body lines.

But I placed "C" over "D" because she was smaller, narrower down her top, lighter boned, more desirable about her neck, underline, and legs. Also she was lighter muscled than "D".

I grant "D" had heavier horns, but I placed her last because she showed the least Corriente Characteristics of any cow in the class, being thick necked, heavy boned, and heavy muscled. Also, she was masculine about her head and had poor horn shape. She was the biggest cow in the class, being too meaty throughout.

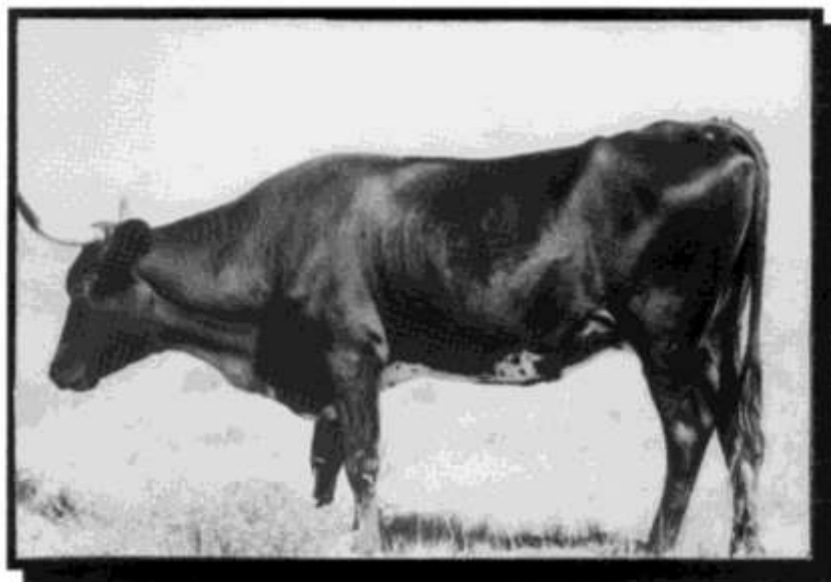
## Judging Guidelines for Corriente Cattle

---



**A**

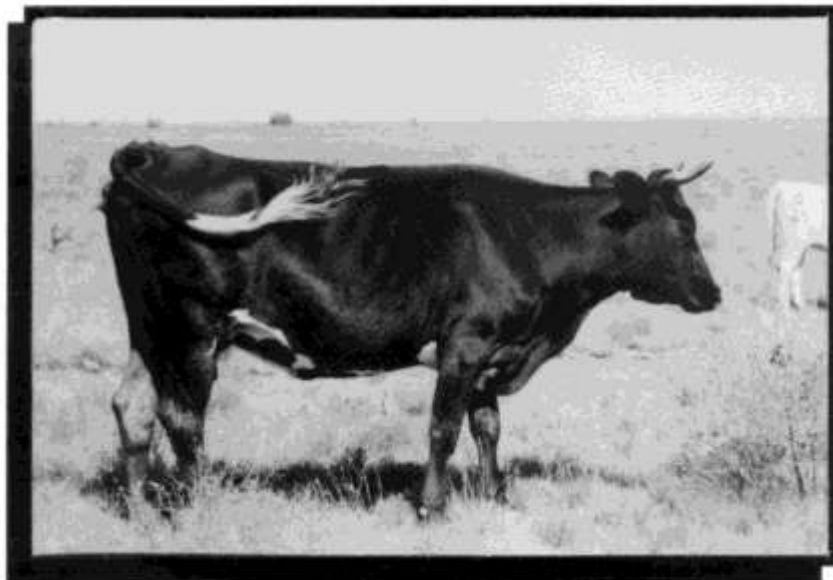




**B**







**C**





**D**



# Judging Guidelines for Corriente Cattle

---

## JUDGING AT A SANCTIONED EVENT

The NACA might not have an official representative of the Association at every sanctioned show. Consequently, it is hoped that the judge or judges at each show will do their best to act as an “unofficial” representative, and will help promote the Association. Each judge should be familiar with the NACA Requirements for a sanctioned show. Although the judge is not in a position of authority over the show management, it may be helpful to make suggestions for correctly following procedures. It would also be helpful if the judge could make a note of problems that arise, complaints from participants, or procedures that do not work or that do not seem necessary. Any suggestions or comments will be appreciated and should be sent to the NACA office.

Keep in mind that any serious complaints from participants about the show or the judging must be sent in writing to the NACA office to be reviewed by the Board of Directors. A judge need not become involved in disputes. Also, remember that no person showing cattle shall engage in any form of misconduct or harassment towards the show management, judges, or association employees. The show management has the right to disqualify or refuse entry to any contestant who is in violation of this rule.

Plan to arrive at the show in plenty of time to check that the show facilities are correct, and to meet with the show management to discuss proper procedures. A judge has the authority to require the show management to make changes to the show pens or arena in order to judge fairly. (See item 7 below.)

Each judge should have a copy of the NACA requirements for a Sanctioned Show with him, as well as this Judging Guideline. However, listed below are the requirements which most directly involve the judge, along with a few additional comments or suggestions.

1. It is up to each judge to complete a judging contract with the show management on the contract form provided by the NACA office. The show management is required to keep the contract on record.
2. A judge may not judge cattle belonging to members of his immediate family or household, nor any employee or employer of said judge in a Corriente business, nor anyone on whose membership the judge is an authorized signer.
3. No animal transferred by a judge after he has been designated to judge a show may be entered in any class he judges.

## Judging Guidelines for Corriente Cattle

---

4. **IMPORTANT:** A list of the entries in each class (with each animal's birth date and assigned hip number, but without the owners or animal's name), performance score cards and class result cards shall be provided for the judge by the show management, however it would be wise for a judge to have his own supply of scoring and result cards. Immediately after each class the judge will fill out the class result card, sign it and give it to the show secretary. **It is the responsibility of the show management to send these signed result cards to the NACA office within two weeks after the show. Non-compliance may result in disciplinary action or suspension.**
5. All show cattle must be clearly marked for identification during judging with a number on both hips. If a tag is used, the owners name must **not** be on it.
6. It is the responsibility of the cattle owners to have number brands and/or tattoos clearly legible.
7. **IMPORTANT:** The show management is responsible, at the judges request, for either having all show cattle in one class together in one show arena at the time of judging, OR having cattle in one class in neighboring pens at the time of judging. Generally, more mature animals which may fight and the Get-of-Sire and Produce-of-Dam classes are judged in separate pens. The pens for mature bulls need not be next to each other if the bulls can fight through the pens, in which case they may be judged in their own pen or pens in close proximity. If one show arena is used it must be large enough for the judge to easily see each individual animal.
8. In a class with a large number of entries in one show arena , the judge may ask the show management to remove some animals from the pen during the judging when he has determined he will not place them; or may judge the class in two sections, with the top animals from each sections ultimately penned together for the final judging.
9. The judge has the discretion to excuse any animal from a class at any time.
10. It is acceptable for a team roping or bulldogging judge to ask the roper/dogger to comment on any animal's performance.

## Judging Guidelines for Corriente Cattle

---

11. When a show is awarding Grand Champion Bull and Cow, they are chosen from all the first place cattle of the same sex (Bull Futurity and Bull Maturity classes excluded). Grand Champion Roping Animal is chosen from the first place Roping Bull, Roping Heifer, and Roping Steer. The Reserve Champion is then chosen from the remaining first place cattle *as well as the animal which placed second to the Grand Champion*. The same judge is required to have judged all the classes of cattle from which the Grand Champion and Reserve Champions are chosen. It is required that the judge carefully reconsider and re-evaluate *all* of the cattle eligible for Grand and Reserve Champion at the time they are chosen. If an animal places first or second in a class which is normally sanctioned by the NACA but that particular class at the show is not sanctioned due to a lack of entries or too few different owners, the animal may still compete for Grand and Reserve and receive an official NACA show record for winning either award.

\* If classes for percentage blood females are held, separate Grand Champion and Reserve Champion Percentage Female awards may be presented, or the winning percentage females may compete against the winners from the open classes for Grand and Reserve Champion.

12. There will be only one judge for each class. Once a class has been judged it shall not be re-judged.

13. A judge is *required* to give results following each class with the winning cattle still in the show arena or show pens, except the show management may choose to announce the Grand and Reserve Champions at a different time.

14. Prior to the show the judge and the show management should agree on whether the judge will give reasons for how each class was placed at the end of that class.

15. The show management should make every effort to prevent people from initiating conversations with the judge during a class, and a judge should not hold conversations or give explanations while in the process of judging.

16. A judge must have judged at 2 regional shows before being qualified to judge the National.

# Judging Guidelines for Corriente Cattle

---

## CATTLE CLASSES SANCTIONED BY THE NACA

- All around Roping Bull
- All around Roping Heifer
- All around Roping Steer
- All around Bulldogging steer

### Conformation Classes

- Weanling Bull (born within the same calendar year as the year of the show)
- Yearling Bull (born in the calendar year previous to the year of the show)
- Yearling Bull Futurity
- Two Year Old Bull (born in the calendar year two years previous to the year of the show)
- Bull Maturity (open to bulls shown in the Futurity the previous year)
- Mature Bull (at least three years old)
- Weanling Heifer (born within the same calendar year as the year of the show)
- Yearling Heifer (born in the calendar year previous to the year of the show)
- Two Year Old Cow (born in the calendar year two years previous to the year of the show)
- Mature Cow (at least three years old and proof of fertility required – see below)
- Get-of-Sire (3 animals with the same sire per entry, at least one female and one bull)
- Junior Get-of-Sire (3 animals with the same sire per entry, at least one female and one bull)
- Produce-of-Dam (2 animals with the same dam per entry)
- Steer (any age up to 650 pounds)

### Performance Classes

- Roping Steer (any age, under 600 pounds)
- Roping Bull (any age, under 600 pounds)
- Roping Heifer (any age, under 600 pounds)
- Bulldogging Steer (any age, 450 – 650 pounds, at least 10 inch horns)
- Bulldogging Bull (any age, 450 – 650 pounds, at least 10 inch horns)
- Bulldogging Heifer (any age, 450 – 650 pounds, at least 10 inch horns)
- Bulldogging Class (any age, any sex, 450 to 650 pounds, at least 10 inch horns)
- Same Sire Roping Cattle Class (3 animals, same sire, any sex, any age, under 600 pounds)

## Judging Guidelines for Corriente Cattle

---

Performance cattle may not be roped or dogged by their owners or any representative of their owners. In roping cattle classes, the headers must be classified as at least #4 under the USTRC system or the equivalent. (See “Judging Performance Cattle” section for more requirements.) Roping entries will be judged on slick horn head catches, not half-head or neck catches.

Any animal’s age in years is calculated as though it was born on January 1<sup>st</sup> of the year of it’s birth.

Any of these classes may be divided into two or more precise age classes, usually based on birth month. These should be designated as “Senior” or “Junior”, (i.e., Senior Yearling Bull and Junior Yearling Bull).

All of the classes listed above for females or steers are open to animals of any percentage blood. They may not be held exclusively for pureblood cattle. When specified, the same classes may be held for exclusively percentage females and steers only. These classes may include  $\frac{1}{2}$  bloods through  $\frac{7}{8}$  bloods in one class, or be specifically for only one percentage, (i.e., a class for  $\frac{1}{2}$  bloods, or for  $\frac{3}{4}$  bloods, or for  $\frac{7}{8}$  bloods).

# Judging Guidelines for Corriente Cattle

---

## JUDGING SPECIFIC CLASSES

Mature Cow: The show management is responsible for verifying that the exhibitor of each entry in the Mature Cow class has arrived at the show with proof of fertility in one of five ways:

1. A veterinarians statement that the cow is bred.
2. A veterinarians statement that the cow is able to conceive.
3. A copy of the registration certificate for one of the cow's calves.
4. The cow has a calf at side.
5. A copy of the Lifetime Dam Production Summary

Futurity and Maturity: The Bull Futurity and Bull Maturity are judged essentially like the Yearling Bull and Two Year Old Bull Classes, but in placing the Futurity judge may base his opinion somewhat more on speculation as to how old the bull will mature, as well as on the quality of the animal at the time of judging.

*In each of the cattle classes below the cattle in each entry must be penned together at the time of judging.*

Get-of-Sire: The purpose of this class is to demonstrate the quality and consistency of the progeny of one bull. Special emphasis should be placed on the similarity of the three animals in each entry as well as their individual conformation. Color should not be important.

Produce-of-Dam: To be judged in the same manner as the Get-of-Sire class, but showing the quality and consistency of the progeny of the cow.

Same Sire Roping Cattle: The purpose of this class will be to demonstrate that one bull is producing excellent roping cattle. There will be 3 animals per entry with the same sire, any age, under 600 pounds. The class may be open to any sex or limited by sex. The three animals will be scored as in a regular roping class and the three with the highest scores wins. The scores may be taken from previously run sanctioned roping classes, or the cattle may be run especially for this class. The three animals are not judged on similarity of conformation.



# Judging Guidelines for Corriente Cattle

---

## ALL AROUND CORRIENTE CHAMPION CLASSES

The All-Around Corriente Champion classes are not judged classes. The winners are determined by the cumulative points in their respective conformation and performance classes. The class recognizes animals that excel in both conformation and performance. To compete for All-Around Corriente Champion, the individual animal must be entered in the corresponding conformation (excluding Futurity and Maturity) and performance classes (examples below), as well as the All-Around Class, for a total of three classes per animal.

### Performance Classes:

- Roping Steer (any age, under 600 pounds)
- Roping Bull (any age, under 600 pounds)
- Roping Heifer (any age, under 600 pounds)
- Bulldogging Steer (any age, 450 – 650 pounds, at least 10 inch horns)
- Bulldogging Bull (any age, 450 – 650 pounds, at least 10 inch horns)
- Bulldogging Heifer (any age, 450 – 650 pounds, at least 10 inch horns)
- Bulldogging Class (any age, any sex, 450 to 650 pounds, at least 10 inch horns)

### Conformation Classes:

- Yearling Bull
- Two Year Old Bull
- Mature Bull
- Yearling Heifer
- Two Year Old Heifer/Cow
- Mature Cow
- Steer (any age, up to 650 pounds)

Scoring will be determined by the following point system, in both conformation and performance classes, with 12 points being the maximum total possible.

- 1<sup>st</sup> Place = 6 points
- 2<sup>nd</sup> Place = 5 points
- 3<sup>rd</sup> Place = 4 points
- 4<sup>th</sup> Place = 3 points
- 5<sup>th</sup> Place = 2 points
- 6<sup>th</sup> Place = 1 point

Ties will be broken by referring to the performance placings, in which the animal with the higher placing wins the tie breaker.

## Judging Guidelines for Corriente Cattle

---

All-Around placings will be awarded to all cattle entered in the All-Around class, that place in the top six in both the conformation and performance classes. If none of the cattle entered in the All-Around place in the top six in both classes at a show, an All-Around will not be awarded.

### Supreme Champion Award

The Supreme Champion Award is separate from the All-Around Corriente Champion, in that the animal does not have to be entered in any other class other than their conformation and performance classes to be eligible. To receive the Supreme Champion Award the animal must win first place in both conformation and performance. Animals entered in the All-Around Corriente Champion class are still eligible for the Supreme Champion Award. Supreme Champion Award Certificates will be issued by NACA for animals earning the award at any NACA Sanctioned Show.